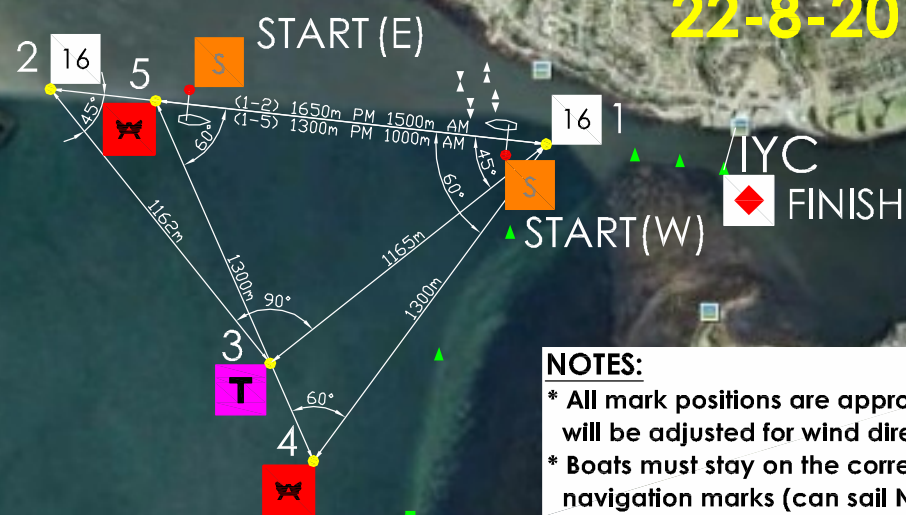


# IYC CLUB COURSES APPENDIX A

## E & W

REVISION L  
22-8-2017



### TY's

**E: (Stb)** (~10.5km)  
Start > 1, 3, 2, 1, 2 >> Finish  
Short 1st race: (~4km)  
Start > 1, 2 >> Finish on water  
Short 2nd race: (~5.5km)  
Start > 1, 2 >> Finish at club

**W: (Port)** (~8km)  
Start > 2, 3, 1, 2, >> Finish  
Short 1st race: (~3.5km)  
Start > 2, 1 >> Finish on water  
Short 2nd race: (~4km)  
Start > 2 >> Finish at club

### FA & OPEN Δ

**E: (Stb)** (~10km am, ~12km pm)  
Start > 1, 4, 5, 1, 5, 1, 4, 5 >>> Finish

**W: (Port)** (~8.5km am, ~10.5km pm)  
Start > 5, 4, 1, 5, 1, 5, 4, 1 >>> Finish  
When finishing at club, ignore the last 1

### NOTES:

\* All mark positions are approximate only & will be adjusted for wind direction/strength.  
\* Boats must stay on the correct side of all navigation marks (can sail North of reef).

### Windward - Leeward

**E: (Stb)**  
Start > 1, 2 [x # of roundings of 1] >> Finish

**W: (Port)**  
Start > 2, 1 [x # of roundings of 2] >> Finish  
When finishing at club, ignore the last 1

16's E 5, W 6 roundings (E~19km, W~20km)  
13's am 4 roundings (E~14km, W~13km)  
Open's 4 roundings (E~15km, W~14km)

# IYC CLUB COURSES APPENDIX A

## NE & SW

REVISION L  
22-8-2017



### TY's

**NE: (Port)** (~10km)  
Start > 1, 3, 2, 1, 2 >> Finish  
Short 1st race: (~4km)  
Start > 1, 2 >> Finish on water  
Short 2nd race: (~5.5km)  
Start > 1, 2 >> Finish at club

**SW: (Stb)** (~9km)  
Start > 2, 3, 1, 2, >> Finish  
Short 1st race: (~4km)  
Start > 2, 1 >> Finish on water  
Short 2nd race: (~4.5km)  
Start > 2 >> Finish at club

### FA & OPEN Δ

**NE: (Port)** (~10km am, ~12km pm)  
Start > 1, 4, 5, 1, 5, 1, 4, 5 >>> Finish

**SW: (Stb)** (~8.5km am, ~10.5km pm)  
Start > 5, 4, 1, 5, 1, 5, 4, 1 >>> Finish  
When finishing at club, ignore the last 1

### NOTES:

\* All mark positions are approximate only & will be adjusted for wind direction/strength.  
\* Boats must stay on the correct side of all navigation marks (can sail North of reef).

### Windward - Leeward

**NE: (Port)**  
Start > 1, 2 [x # of roundings of 1] >> Finish

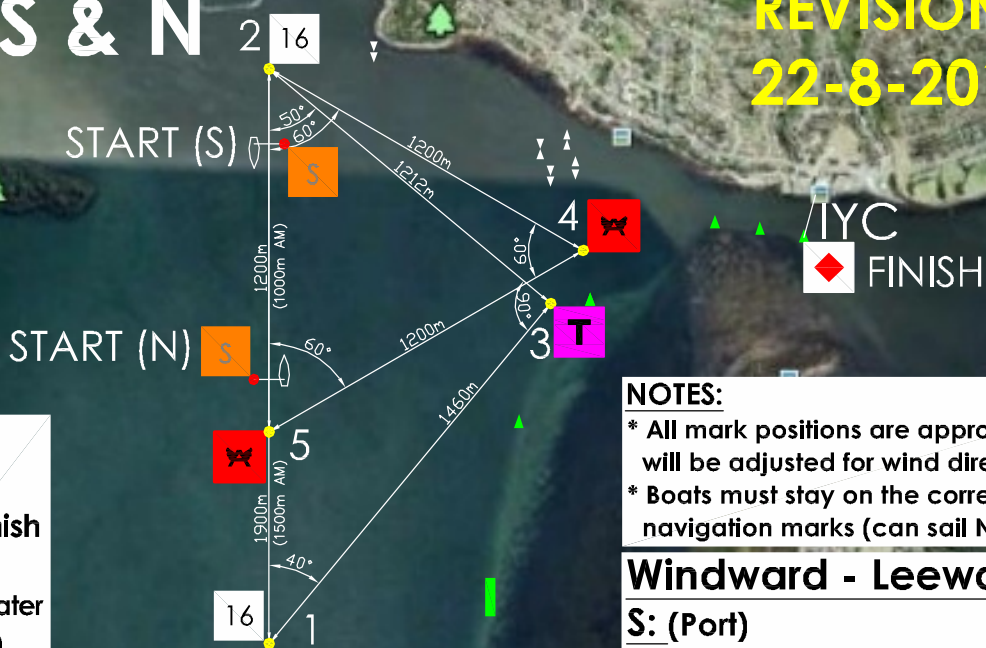
**SW: (Stb)**  
Start > 2, 1 [x # of roundings of 2] >> Finish  
When finishing at club, ignore the last 1

16's 5 roundings (NE~21km, SW~19km)  
13's am 4 roundings (NE~14km, SW~12km)  
Open's 4 roundings (NE~17km, SW~15km)

# IYC CLUB COURSES APPENDIX A

## S & N

REVISION L  
22-8-2017



### TY's

**S: (Port)** (~12.5km)  
Start > 1, 3, 2, 1, 2, 1 > Finish  
Short 1st race: (~4km)  
Start > 1, 2 >> Finish on water  
Short 2nd race: (~5.5km)  
Start > 1, 2, 1 > Finish at club

**N: (Stb)** (~12km)  
Start > 2, 3, 1, 2, 1, 2 > Finish  
Short 1st race: (~4km)  
Start > 2, 1 >> Finish on water  
Short 2nd race: (~5.5km)  
Start > 2, 1, 2 > Finish at club

### FA & OPEN Δ

**S: (Port)** (~10.5km am, ~12.5km pm)  
Start > 5, 4, 2, 5, 2, 5, 4, 2, 5 >> Finish  
When finishing on water, ignore the last 5

**N: (Stb)** (~10.5km am, ~12.5km pm)  
Start > 2, 4, 5, 2, 5, 2, 4, 5, 2 >> Finish  
When finishing on water, ignore the last 2

### NOTES:

\* All mark positions are approximate only & will be adjusted for wind direction/strength.  
\* Boats must stay on the correct side of all navigation marks (can sail North of reef).

### Windward - Leeward

**S: (Port)**  
Start > 1, 2 [x # of roundings of 1] >> Finish  
When finishing at club, ignore the last 2

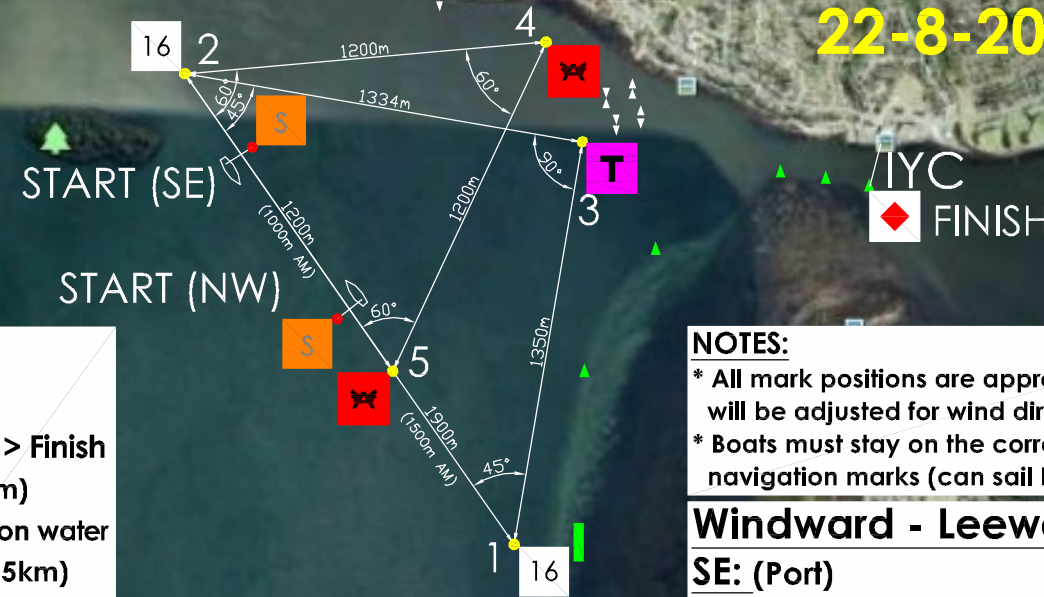
**N: (Stb)**  
Start > 2, 1 [x # of roundings of 2] >> Finish  
When finishing at club, ignore the last 1

16's 5 roundings (SE~19km, NW~19km)  
13's am 4 roundings (SE~13km, NW~13km)  
Open's 4 roundings (SE~15km, NW~15km)

# IYC CLUB COURSES APPENDIX A

## SE & NW

REVISION L  
22-8-2017



### TY's

**SE: (Port)** (~12.5km)  
Start > 1, 3, 2, 1, 2, 1 > Finish  
Short 1st race: (~4km)  
Start > 1, 2 >> Finish on water  
Short 2nd race: (~5.5km)  
Start > 1, 2, 1 > Finish at club

**NW: (Stb)** (~12km)  
Start > 2, 3, 1, 2, 1, 2 > Finish  
Short 1st race: (~4km)  
Start > 2, 1 >> Finish on water  
Short 2nd race: (~5.5km)  
Start > 2, 1, 2 > Finish at club

### FA & OPEN Δ

**SE: (Port)** (~10.5km am, ~12.5km pm)  
Start > 5, 4, 2, 5, 2, 5, 4, 2, 5 >> Finish  
When finishing on water, ignore the last 5

**NW: (Stb)** (~10.5km am, ~12.5km pm)  
Start > 2, 4, 5, 2, 5, 2, 4, 5, 2 >> Finish  
When finishing on water, ignore the last 2

### NOTES:

\* All mark positions are approximate only & will be adjusted for wind direction/strength.  
\* Boats must stay on the correct side of all navigation marks (can sail North of reef).

### Windward - Leeward

**SE: (Port)**  
Start > 1, 2 [x # of roundings of 1] >> Finish  
When finishing at club, ignore the last 2

**NW: (Stb)**  
Start > 2, 1 [x # of roundings of 2] >> Finish  
When finishing at club, ignore the last 1

16's 5 roundings (SE~19km, NW~19km)  
13's am 4 roundings (SE~13km, NW~13km)  
Open's 4 roundings (SE~15km, NW~15km)